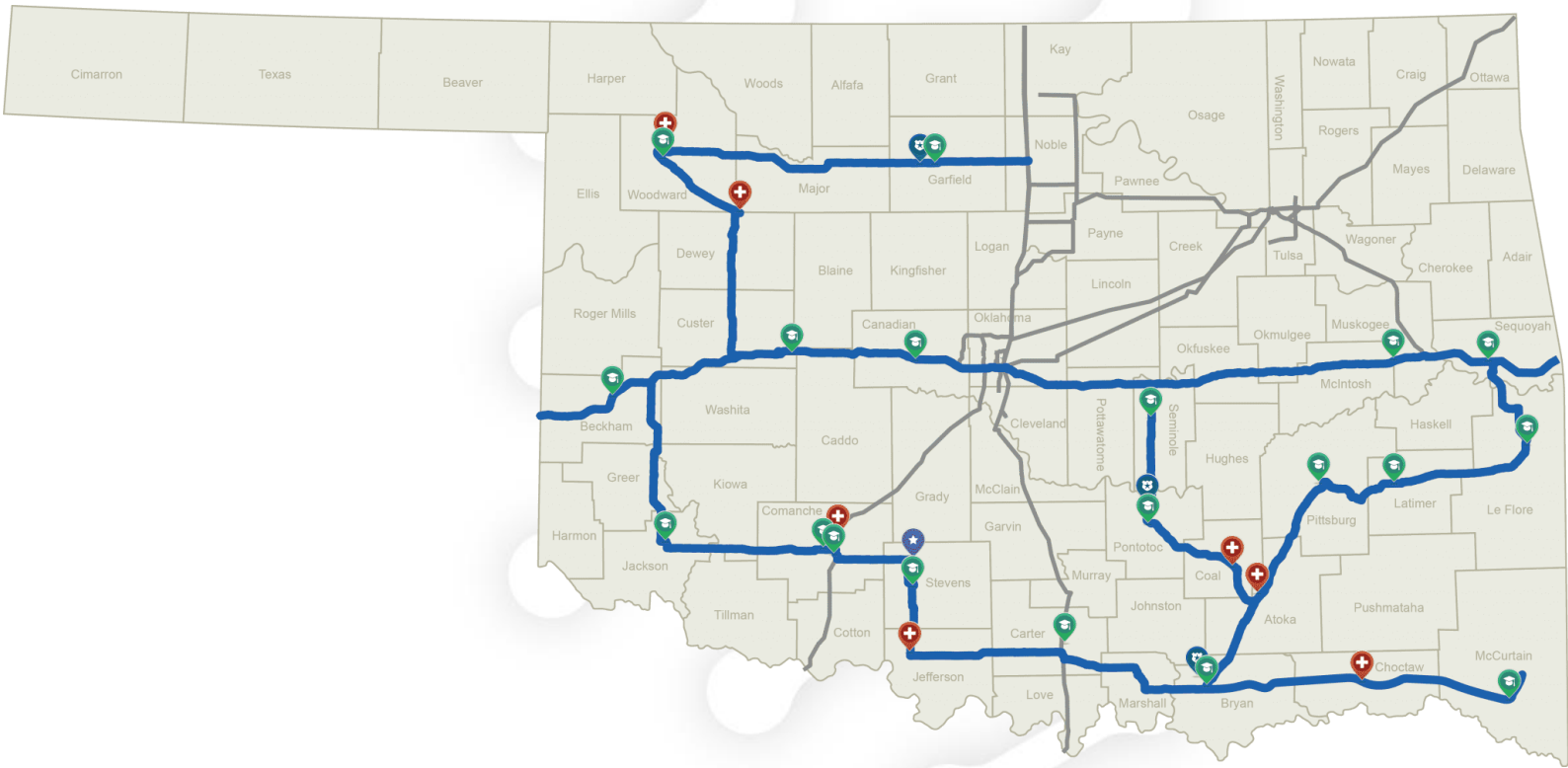


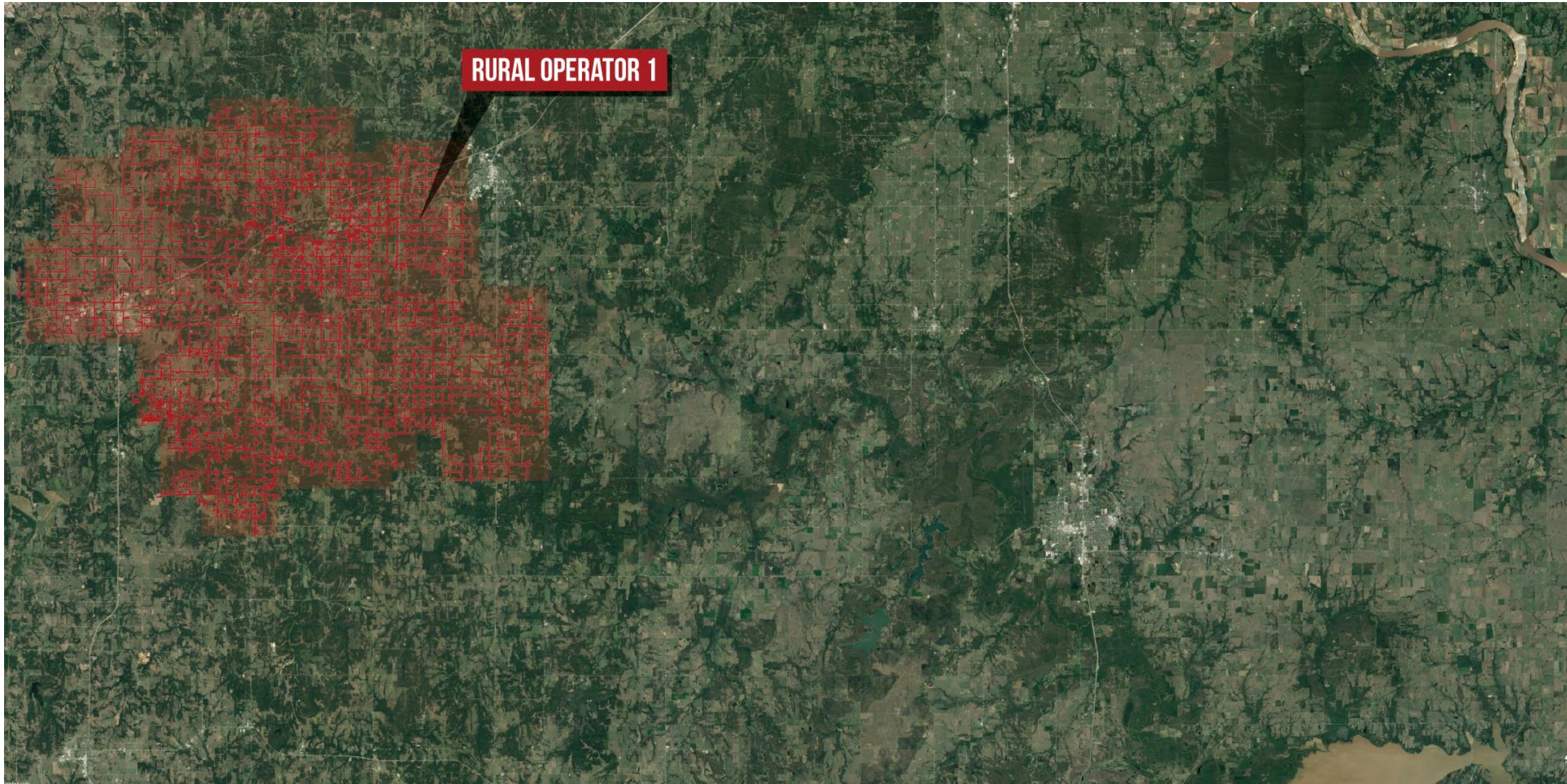
# Traditional Middle Mile Networks



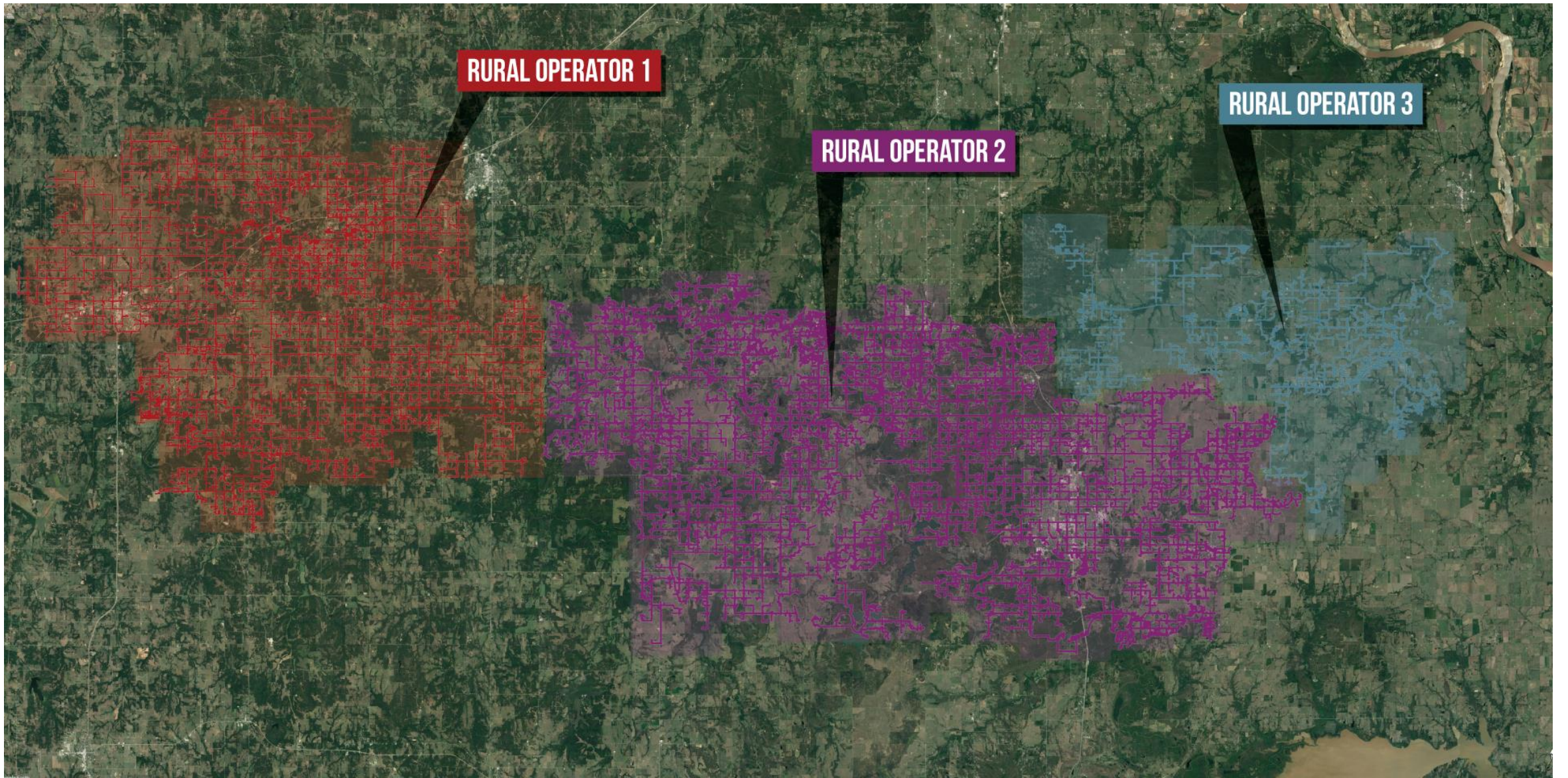
OneNet Network Map



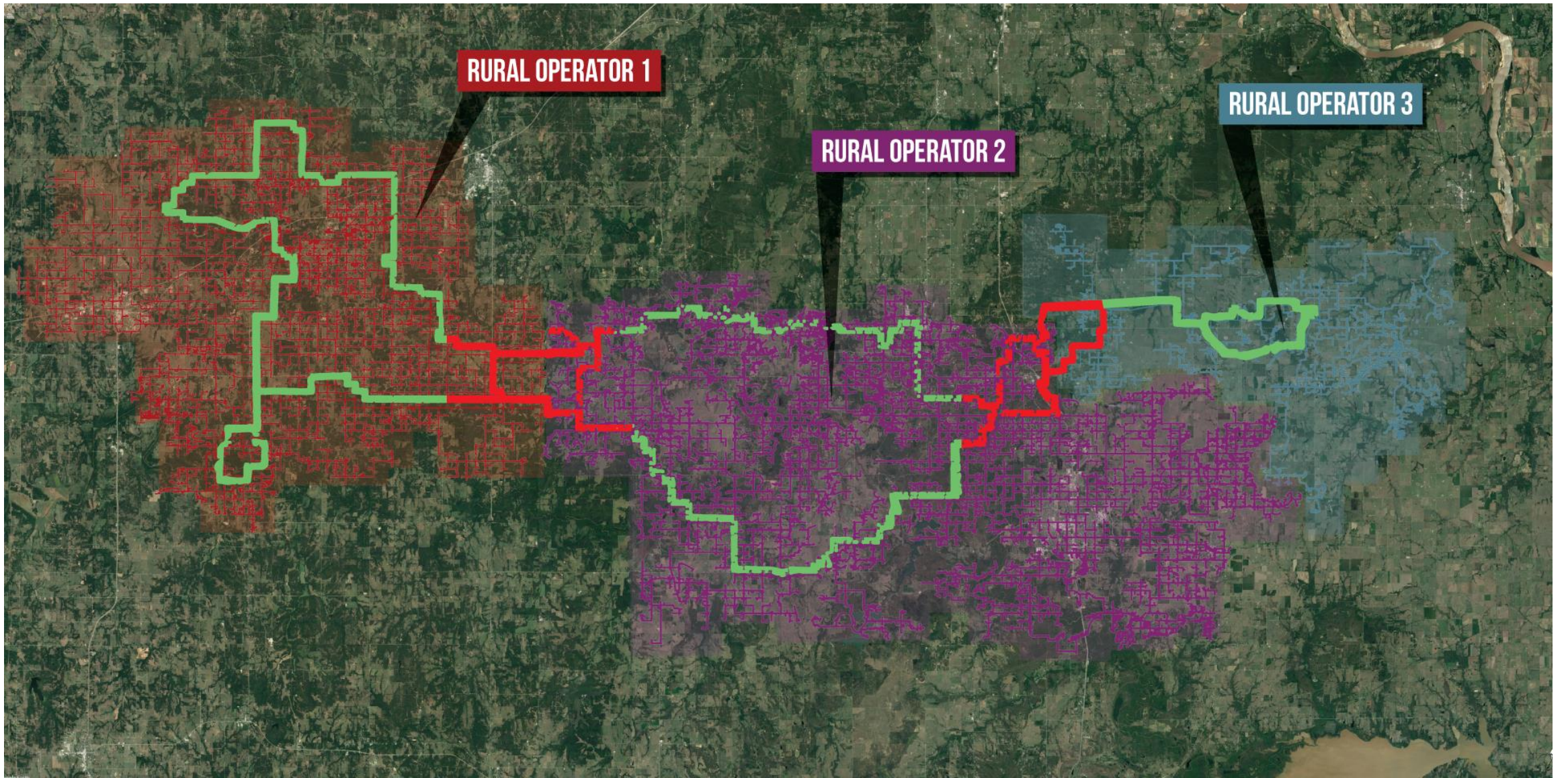






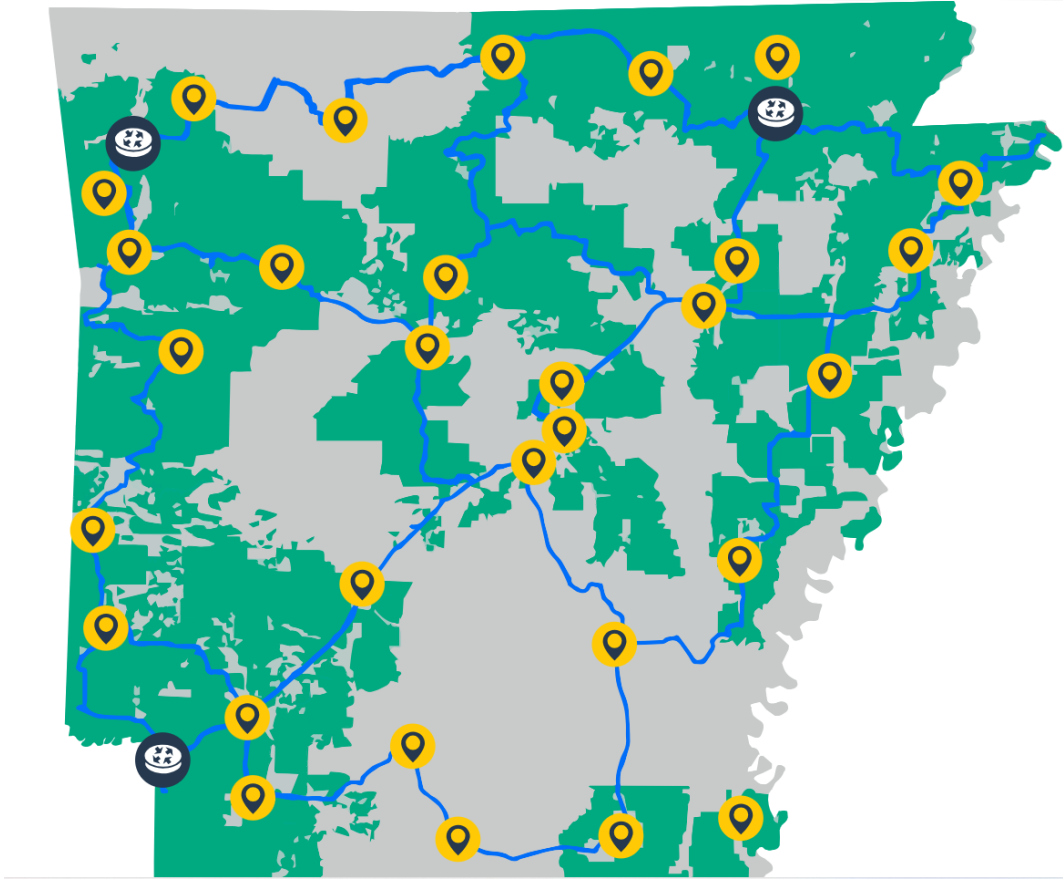




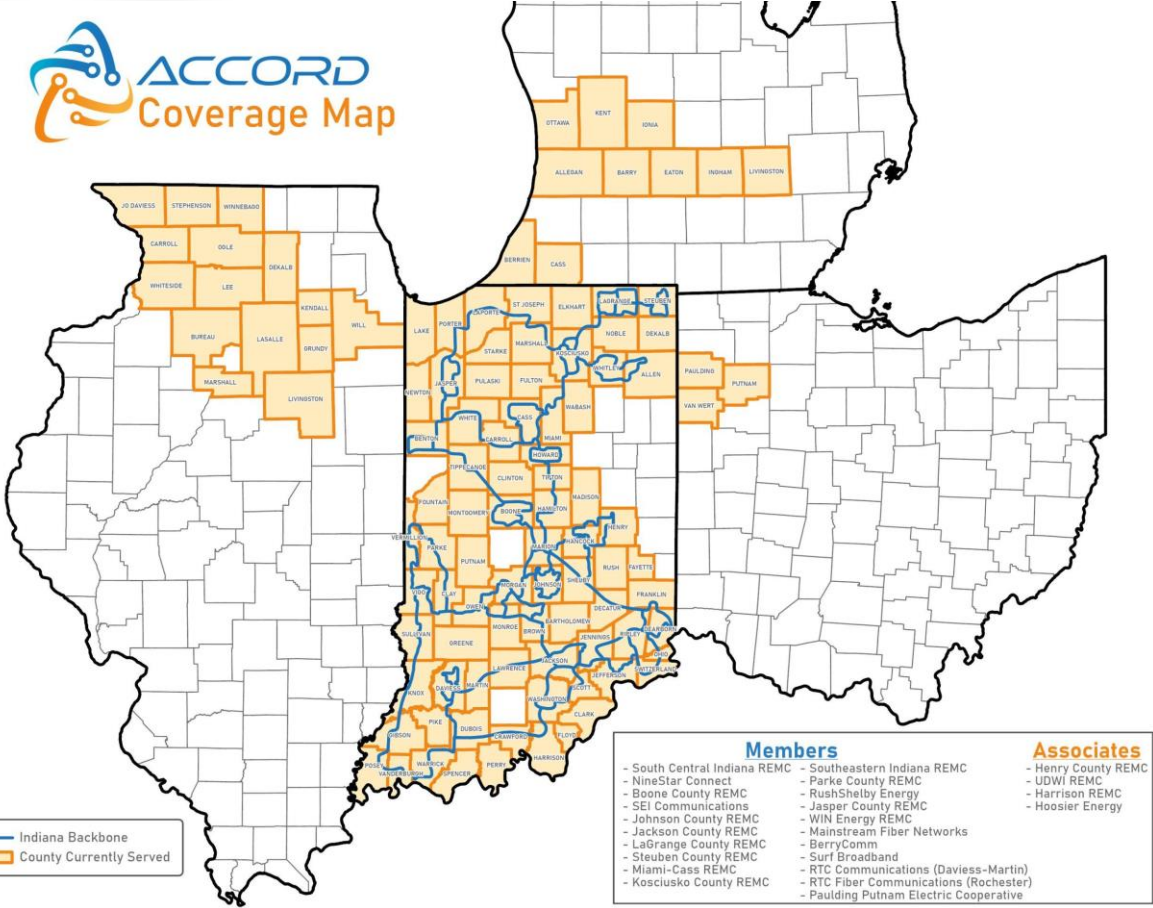




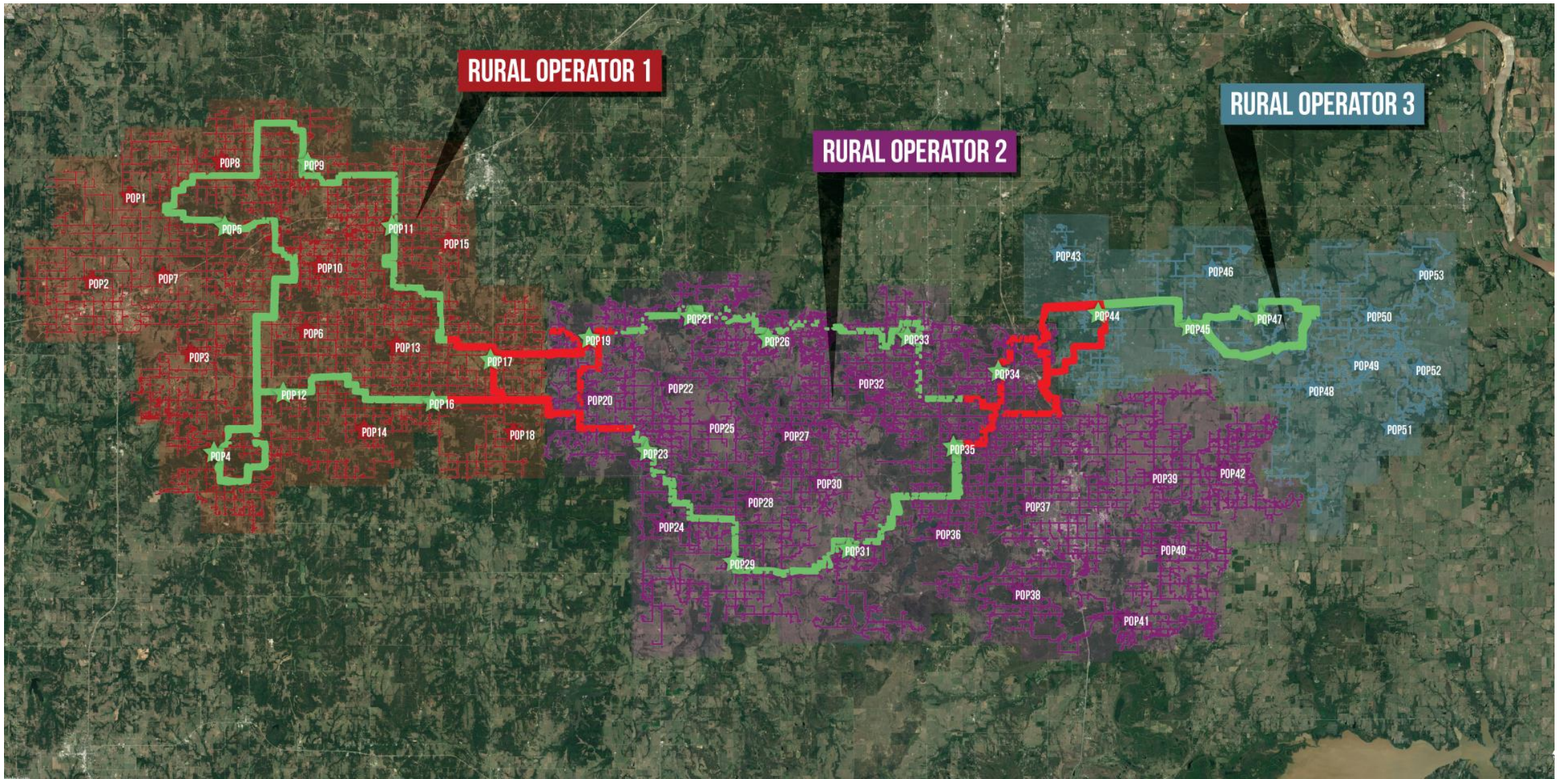
# Examples



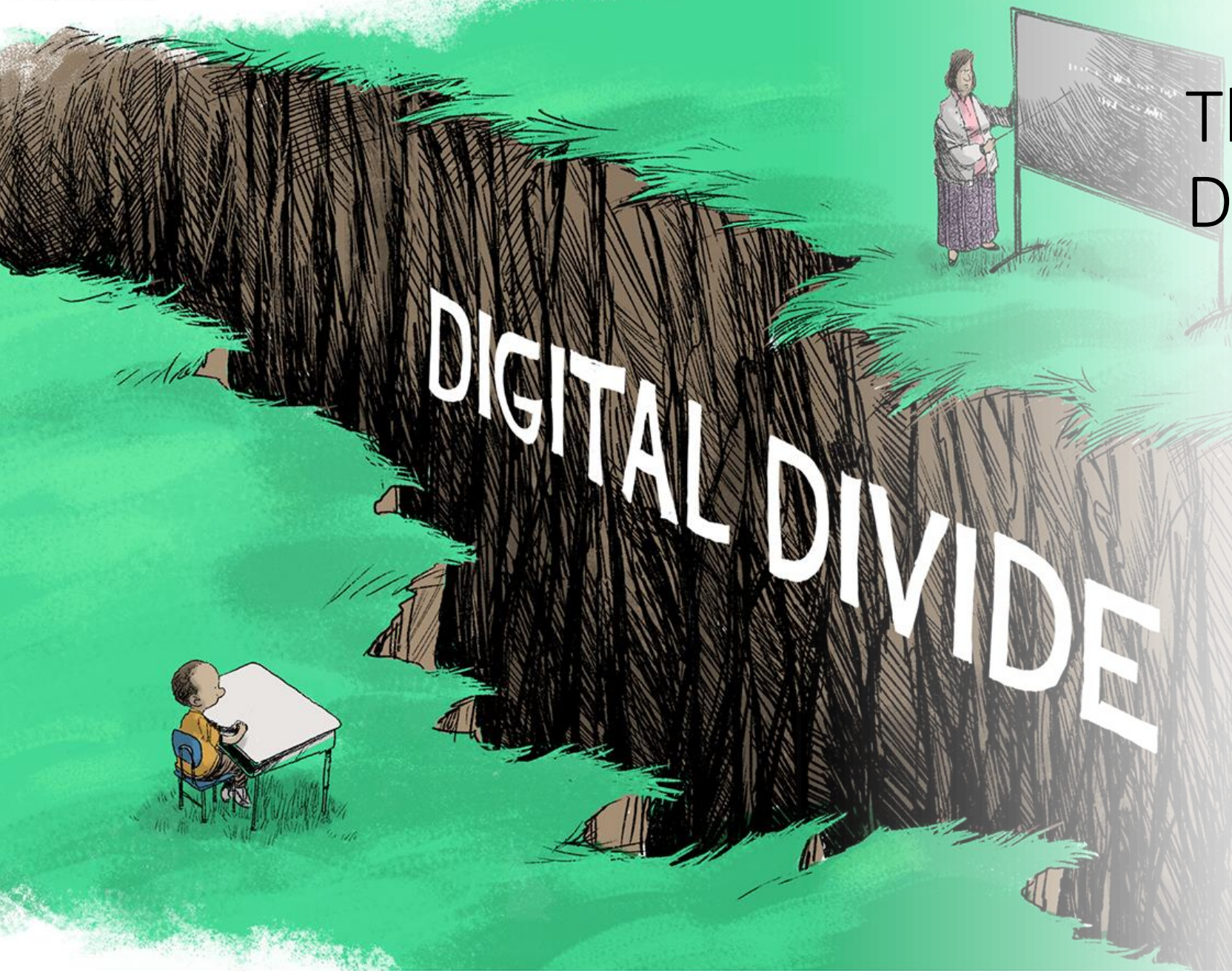
Diamond State Networks











# The Urban-Rural Divide

- Urban areas have large customer sets and are served by centralized data centers within their geographic boundaries. Most cities within a radius of 100 miles
- Rural areas will see an explosion of fiber builds in the next 5 years but can not be served by centralized data centers for low latency applications
- Average ping greater than 5ms within network. Cyber Sickness at >7ms
- The next digital divide will be not of speed but of latency

# Edge Networking and Middle Mile Networks

Edge Networking in rural areas will be powered by rural MM Networks

<https://www.bbcmag.com/broadband-applications/a-middle-mile-model-for-rural-operators>